

Visit to Narayana Nellore Village, Penagalur Mandal, Kadapa District, AP

Himanshu Chauhan,

Pratiyush kumar,

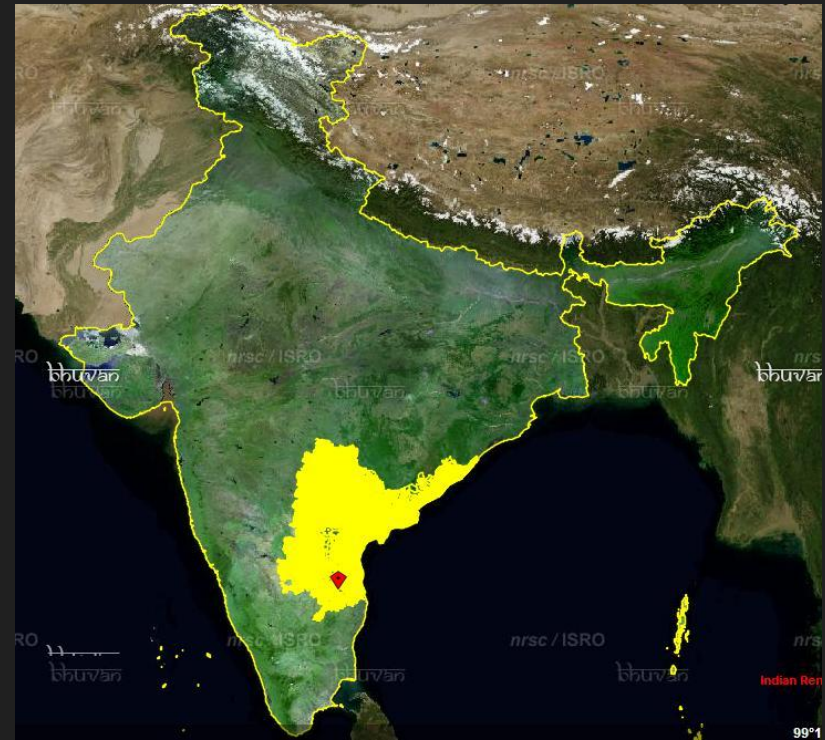
N. Mohondas Singh,

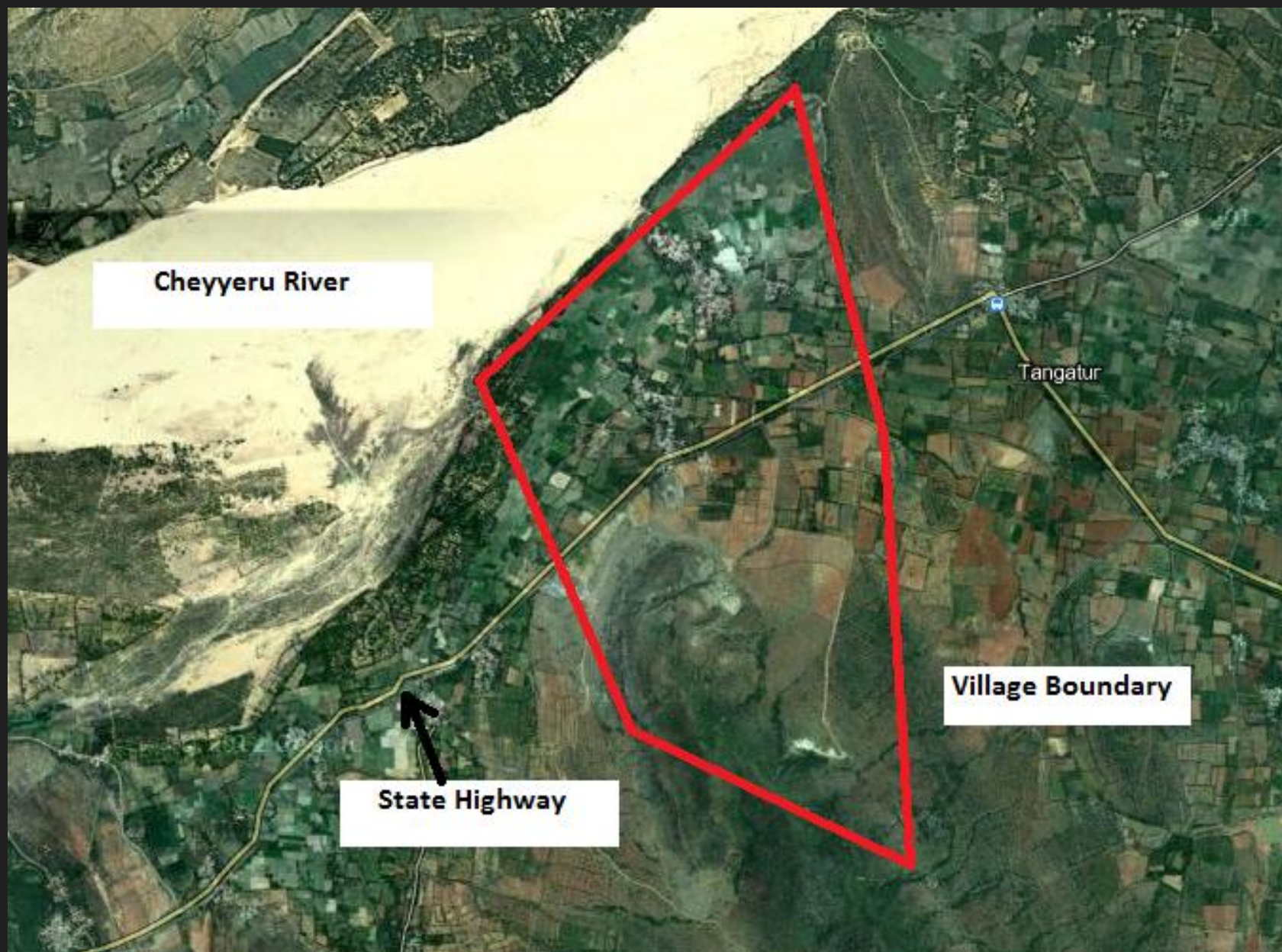
Maria Christu Raja D,

Swayam Mallick

Location

- Kadapa District, Penagalur Mandal
- Located on the banks of Cheyyeru river, a tributary of Penna River.
- Well connected with the Rajempet-Tirupati State Highway, which is bifurcating the village.





Cheyyeru River

Tangatur

Village Boundary

State Highway

History and Timeline

- Started around 1800
- It has Lord Shiva temple which dates back to the ages of Matli Kings, who ruled in 17th century .



Timeline

TIMELINE	MAJOR EVENTS RECORDED
1810-20	VILLAGE STARTED
1920	ESTABLISHMENT OF POST OFFICE
1940	INAUGURATION OF PANCHAYATI RAJ INSTITUTIONS
1960	ESTABLISHMENT OF SCHOOLS
1970-71	ELECTRICITY CONNECTION ESTABLISHMENT
1980-81	START OF MIGRATION FROM VILLAGE
1985-86	ESTABLISHMENT OF WATER PUMPS
1990	ESTABLISHMENT OF HEALTH CENTRES
1991-92	FIRST TELEPHONE LINE CONNECTION ESTABLISHMENT
1995	FIRST TRACTOR USED IN FARMING ACTIVITIES
2000-01	ESTABLISHMENT OF WATER TANKS
2005	CONSTRUCTION OF PUCCA ROADS
2006	FIRST MAJOR FLOODING
2006	USE OF MOBILE PHONES STARTED

Transect walk...



.....begins

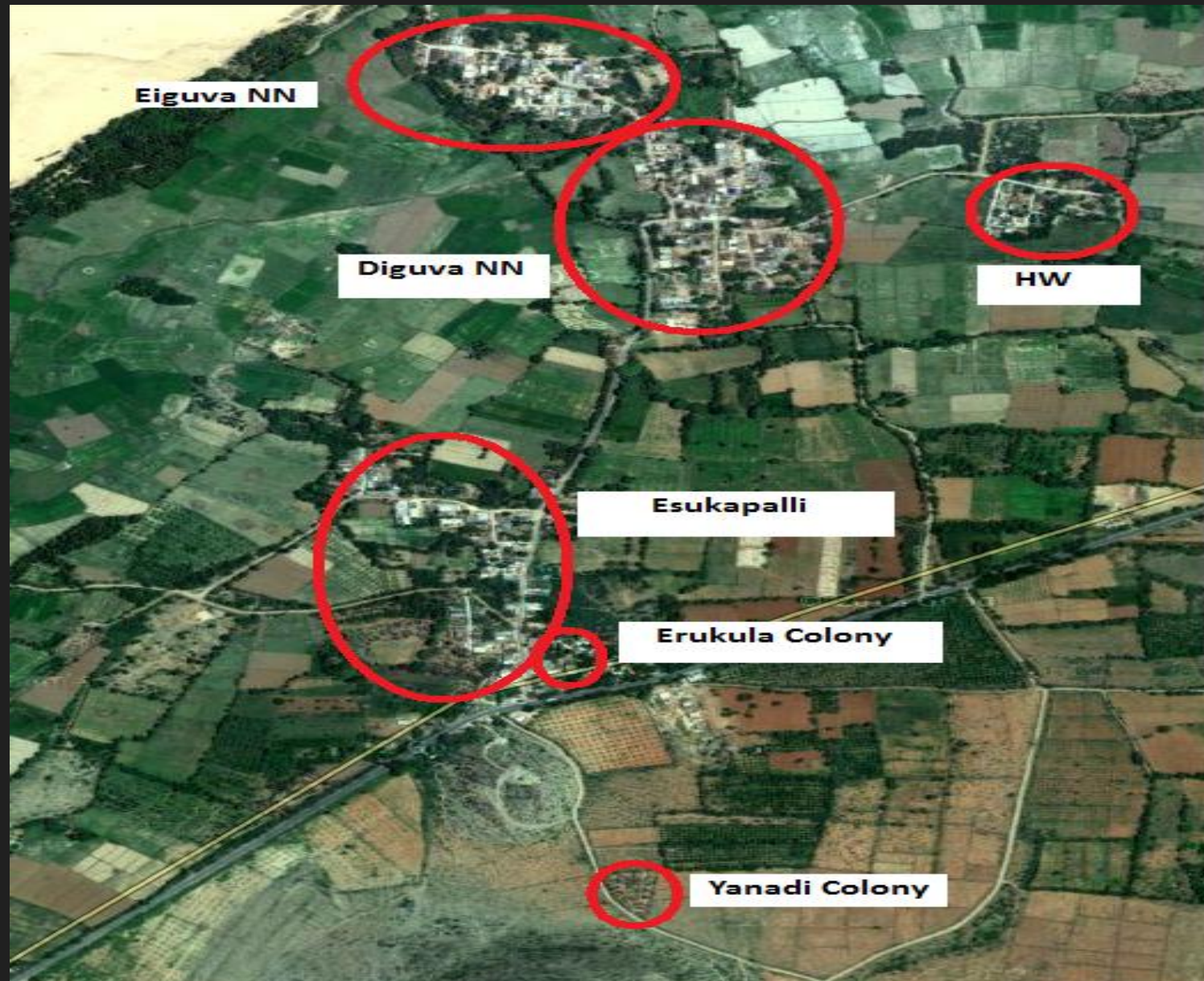
Demography

	Total	Male	Female	Sex Ratio
Overall Population	1690	862	828	961
0-6 year Population	150	83	67	807

Habitations

- Narayana Nellore village is a cluster of 5 hamlets
 - Esukapalli
 - As part of this hamlet and close to it there is ST colony called Erukula
 - Diguva Narayana Nellore
 - Eiguva Narayana Nellore
 - Narayana Nellore HW
 - Yanadi Colony (ST)
- Isolation of SC
- No such habitation isolation with ST's.

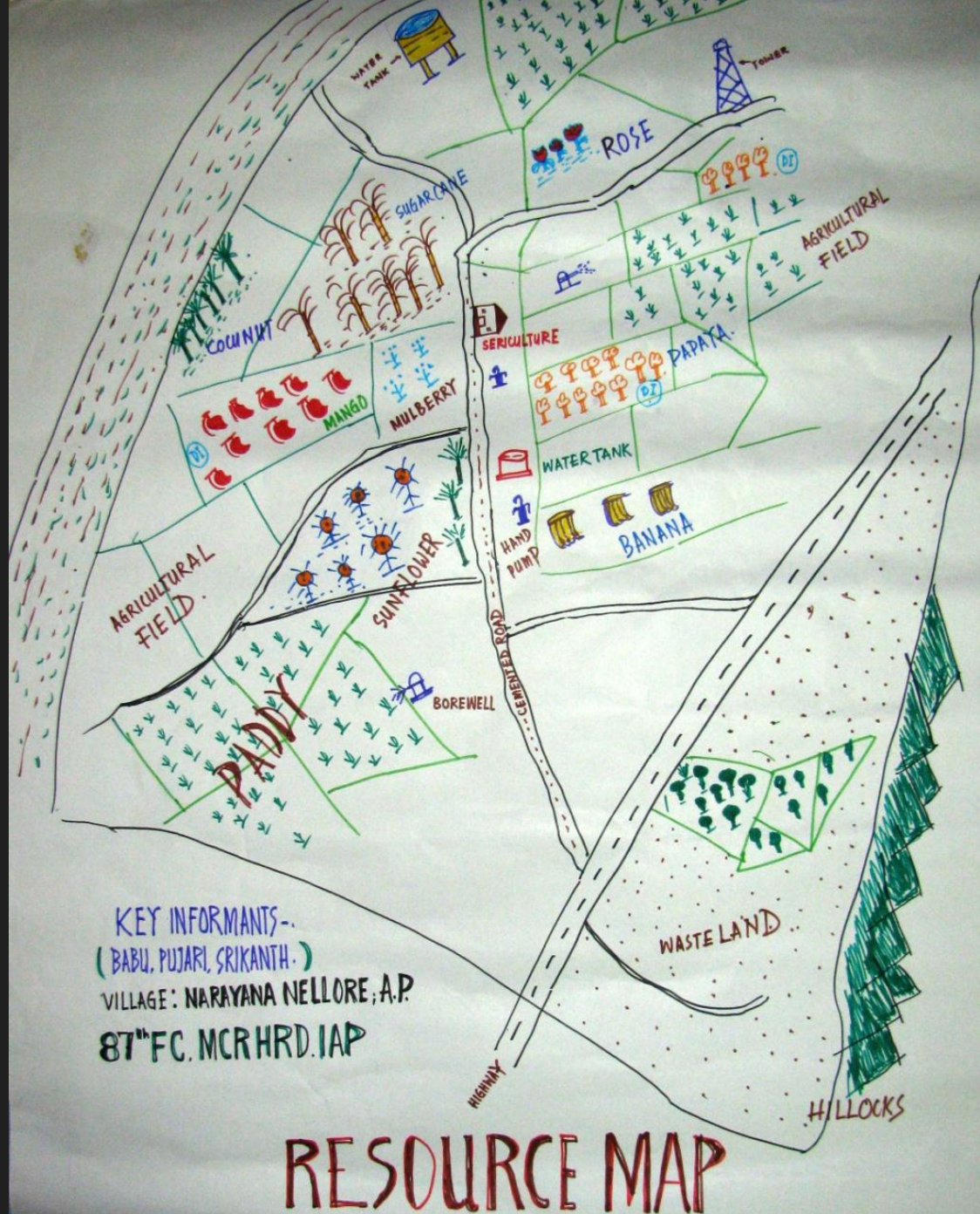
Map Showing habitations



Social Map



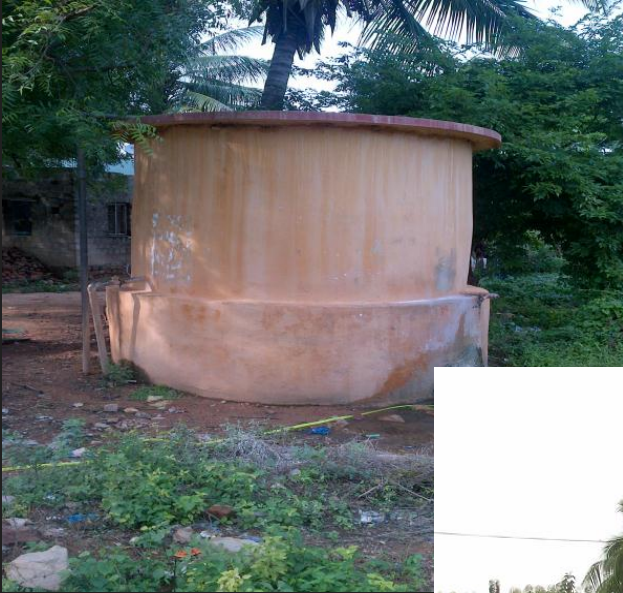
Resource Map



Infrastructure

Water Resources

Water Tank



Overhead Water Tank

River



Roads

- Hamlets are connected by thick CC road
- State Highway passes through the village
- Which provide good connectivity with nearby mandal-town of Rajampet (8 km) and Penagalur (10 km).

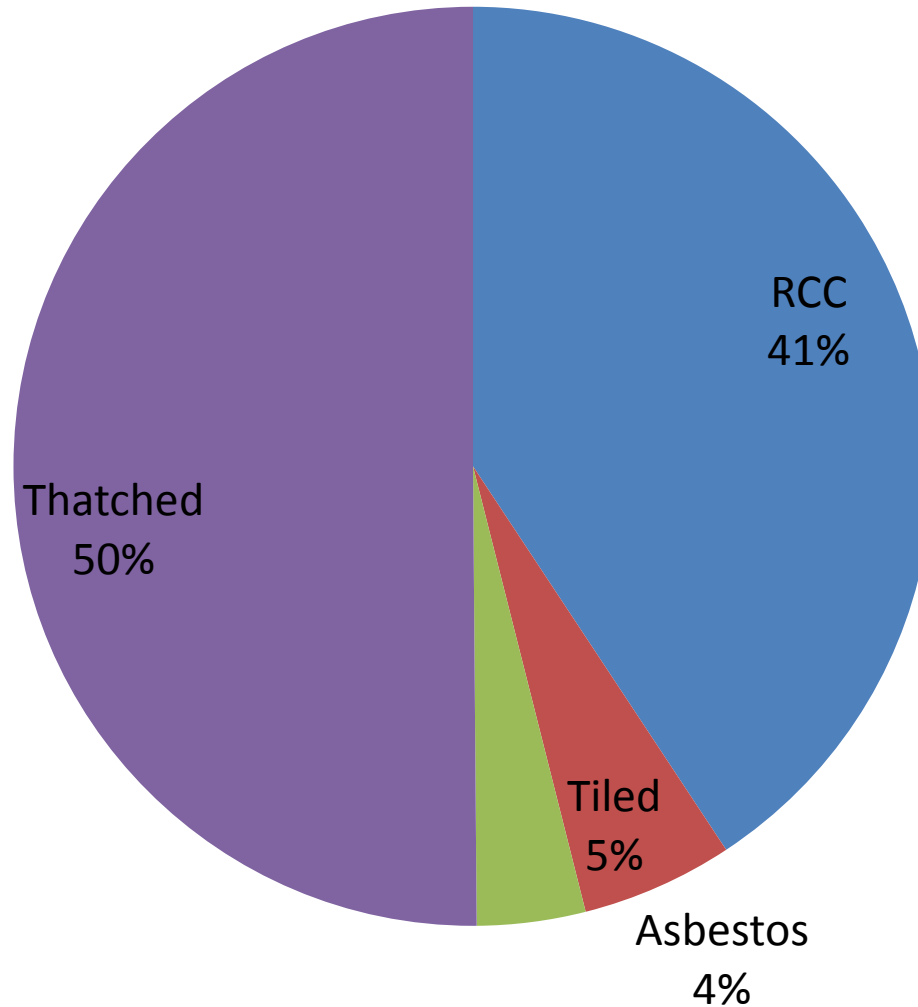


Housing

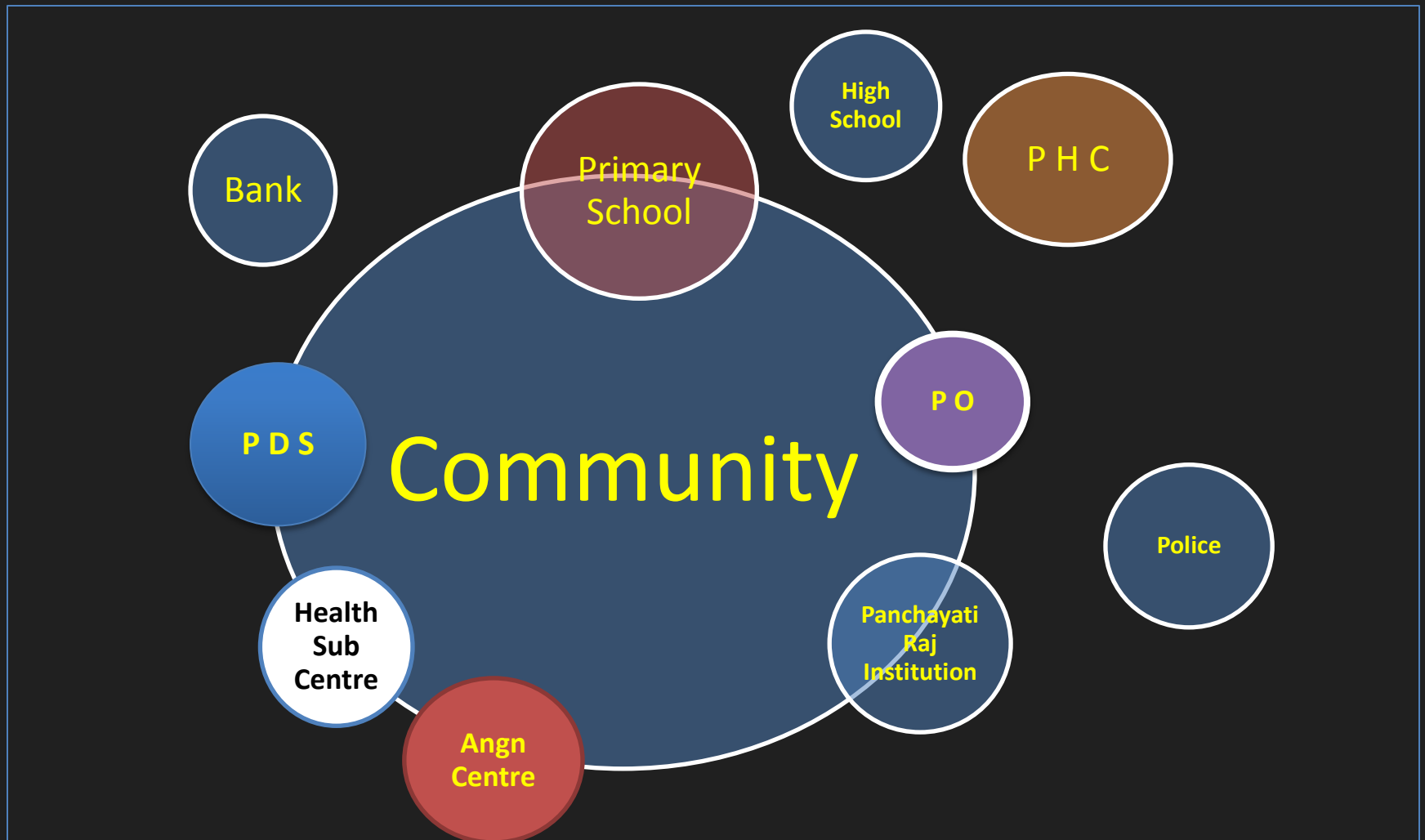


Housing

Condition of Houses



Venn Diagram Showing The Proximity Of Amenities To The Village Community



Agriculture

➤ Agriculture is the main stay of Narayana Nellore.

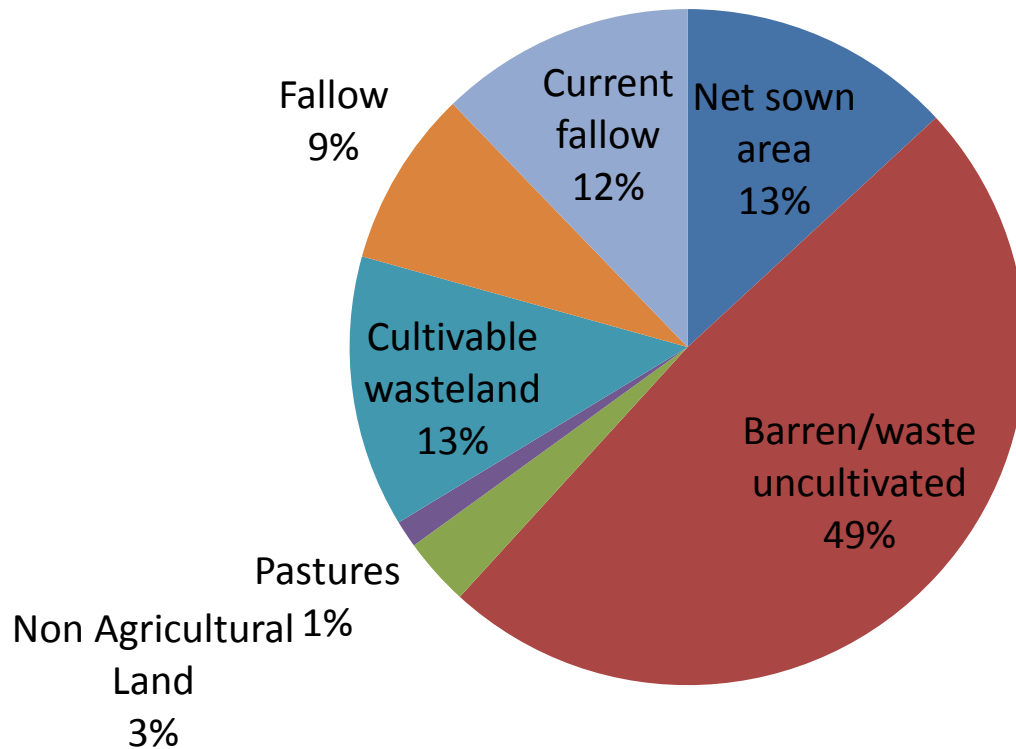


- Nearly 70-75% involvement
- Paddy, mango, Banana, Sunflower, turmeric and Papaya, lily
- Livestock rearing



Land Use System

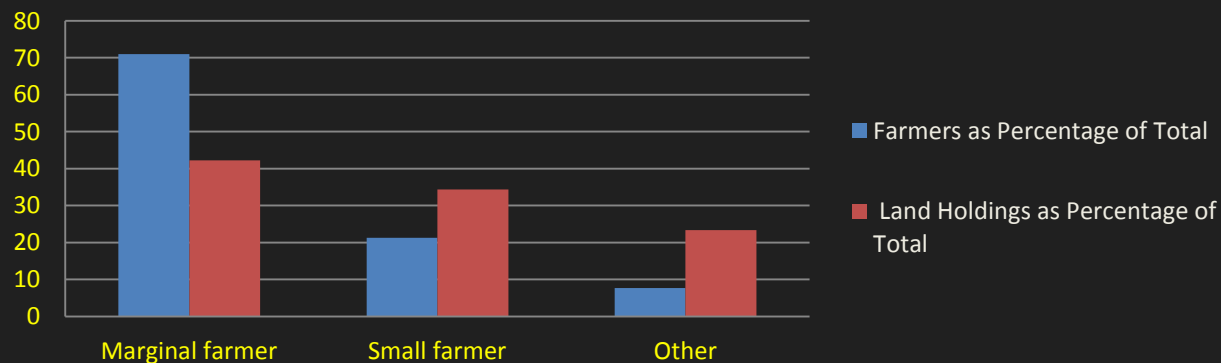
Land Utilization in Narayana Nellore



Land Holding

Farmer	No of Farmers	Total land in hect	No of Farmers in %	Land holdings %
Marginal farmer	166	88.4	71.0	42.2
Small farmer	50	72.12	21.3	34.4
Other	18	48.9	7.7	23.4
Total	234	209.42		

Distribution of farmers with respect to their land holdings



Irrigation

- Bore wells
- Canal



- River
- Hand pump

Some Important Crops

- Paddy is the mostly grown crop - varieties are Nellore Masura rice, Budda and Molocula.
- Horticulture crops occupies 65-70% of the total grown area.
- Mango is mostly grown horticulture crop.
- **Sericulture**- support from AP Pattu (Silk) Parishrama Sakha for silk cocoon cultivation.

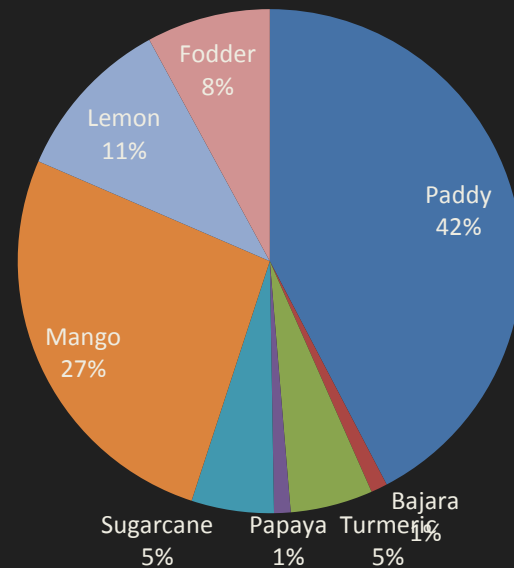


Contd...

- Vegetables like Beans, tomato, brinjal sown as middle crop
- Lily and Rose plantation



Area under various crops



GOVERNMENT SCHEMES

- MGNREGS extended for agricultural works
- Seeds subsidy and 50% subsidy on rejuvenation of mango plantation
- Drip irrigation
- NPM (Non pesticide Management)
- Soil testing -by Mandal Agricultural Department
- For farm mechanization government has launched Yantra Lakshmi

Problems and solutions

- No crop insurance scheme and no disaster management
- Most of the SC and ST villagers are landless
- Reluctance to soil testing
- Lack of adoption new technologies and no agriculture extension worker
- Lack of educated farmers

Status of Education



Literacy Rate

	POPULATION	No of LITERATES	LITERACY RATES
TOTAL	1628	990	61 %
MALES	862	621	72 %
FEMALES	764	369	48 %
SC	153	67	43 %
ST	39	16	41 %

- Literacy rate being lowly 60 %.
- Literacy rates of females as well as sc & st population are very low

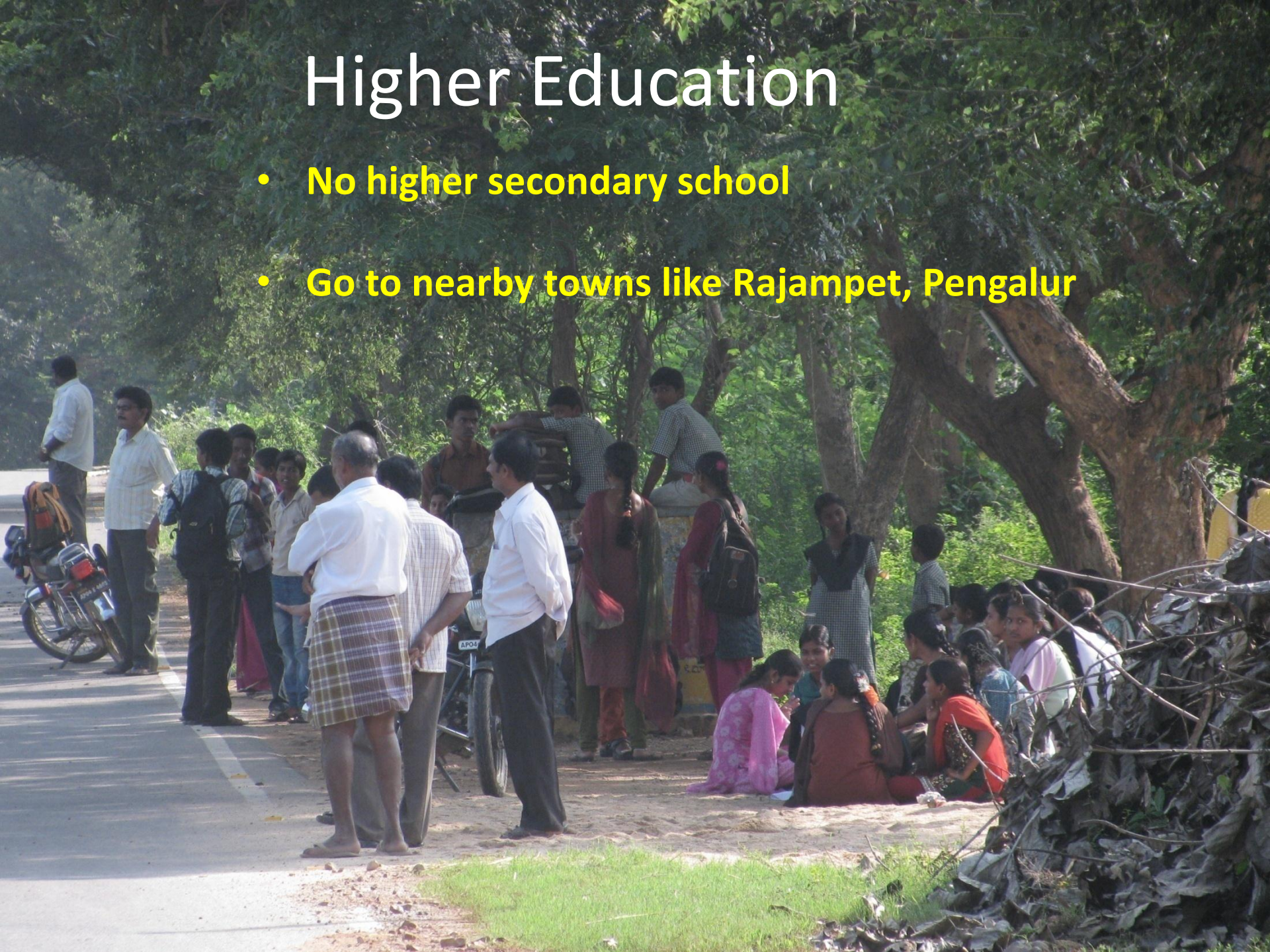
Primary Education

- 2 schools in the village
 - Primary in Esukapalli hamlet
 - Upper primary in Eguva Narayana Nellore hamlet
- Economic ally well off households
- MDM, freebooks, uniforms...



Higher Education

- No higher secondary school
- Go to nearby towns like Rajampet, Pengalur



Adult literacy Programme

- Sakshar Bharat Mission
- Total 530, 15+ illiterates are identified
- 2 phases completed

	Male	female	Total
No. of learners Phase-I	0	80	80
No. of learners Phase-II	0	78	78
No. of learners Phase-III	26	154	180

Contd...

A 'mini library'



Female Education

- Female Literacy as per 2011 census is 56.64%
- Trend among Younger Generation
- Rich Poor Variation
- Poverty, early marriage and distance of high school from the village

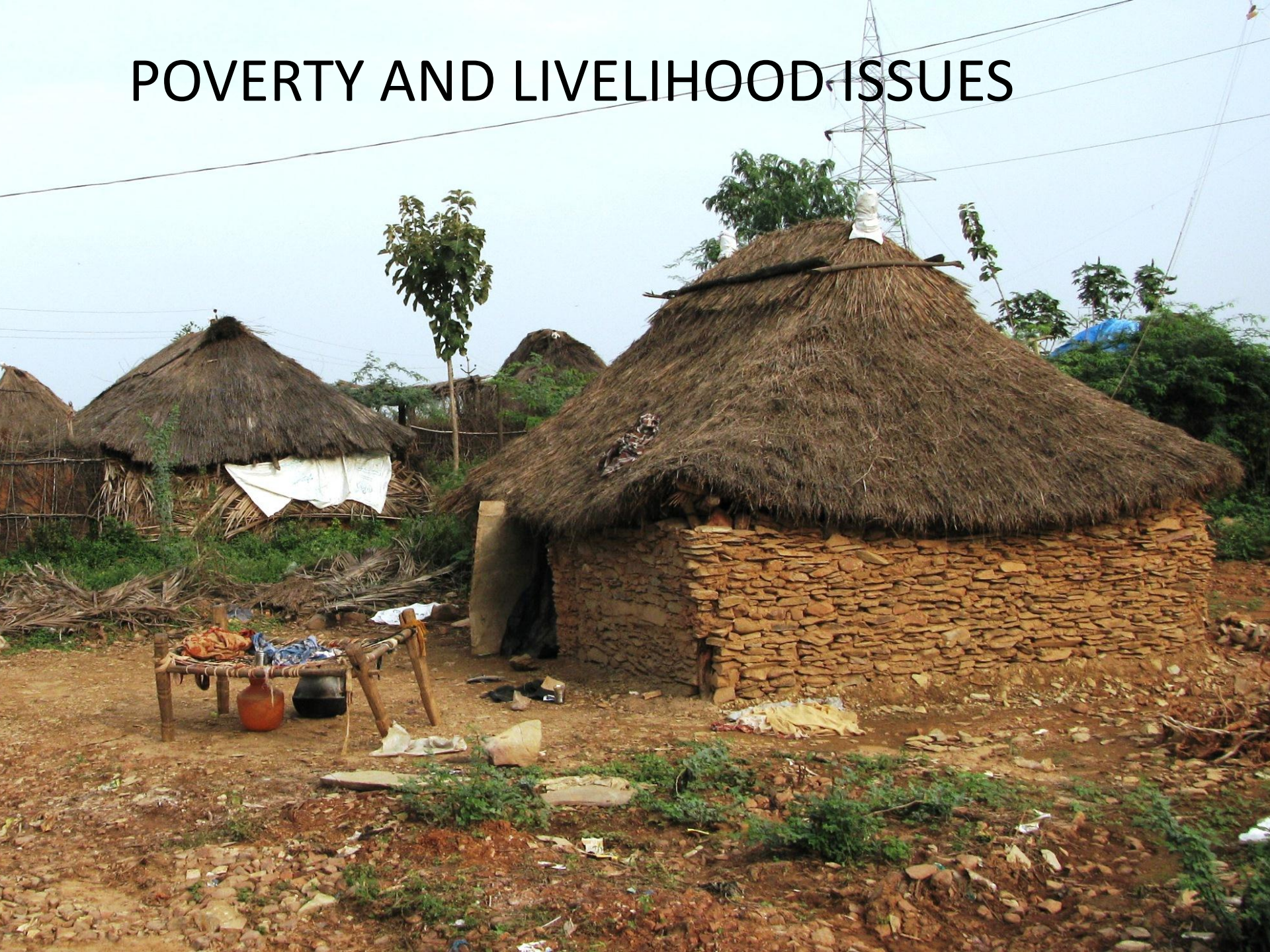


Health

- One health sub-center
- 3 ANMs
- Small cases like fever, cough-cold etc.
- Referral services
- 100 % immunization of children (below 1 year) 100 % institutional deliveries
-
- Lack of Public sanitation



POVERTY AND LIVELIHOOD ISSUES



Matrix ranking

MEN							
CAUSES	NARASIM A (DWL)	RAJAIYA (DWL)	BABU (STUDEN T)	SUBHAIY A (DWL)	HARI (STUDE N)	TOTAL	RANK
LANDLESSNESS	1	1	2	2	1	7	I
ILLITERACY	3	3	1	3	4	14	III
LOW WAGES	2	2	4	1	3	12	II
IGNORANCE OF SCHEMES	6	5	5	4	2	22	IV
INDEBTEDNESS	5	6	6	5	6	28	VI
GAMBLING & LIQUOR	4	4	3	6	5	22	IV
MEN PERCEPTION - LANDLESSNESS>LOW WAGES>ILLITERACY							
WOMEN							
CAUSES	LAXMIDE VI (HW)	SUBHAD RA (HW)	PRIYANK A (HW)	VENKAT ASUB(H W)	PENCH MA(SHG L1)	TOTAL	RANK
LANDLESSNESS	3	4	6	5	2	20	V
ILLITERACY	2	5	2	1	3	13	I
LOW WAGES	5	2	1	2	5	15	III
IGNORANCE OF SCHEMES	4	3	3	3	4	17	IV
INDEBTEDNESS	6	6	4	4	6	26	VI
GAMBLING & LIQUOR	1	1	5	6	1	14	II
WOMEN PERCEPTION - ILLITERACY>LIQUOR & GAMBLING > LOW WAGES							

MODES OF LIVELIHOOD

- AGRICULTURE
- WORK IN MIDDLE EAST
- HORTICULTURE
- MGNREGA
- TRADITIONAL EMPLOYMENT
- SELF-EMPLOYMENT



Middle East

- 150 people are working in Middle East out of which around
- 100 are men and 50 are women
- Majority unskilled
- Hefty amount paid to middlemen's
- Skill development

SELF HELP GROUPS

■ IKP (INDIRA KRANTHI PADAM)

- Women empowerment
- Poverty alleviation

■ VILLAGE ORGANISATION

- Bank linkage = rs.14550000
- Gas connections = 117
- Children scholarships = 85



SHG AT NARAYANA NELLORE - IN DETAIL

Total SHG's in Narayana Nellore Village	30
Total number of Households	448
Total Population	1690
Total Families Joined in SHG's	308

SC	ST	BC	OC	Total
1	4	4	21	30

LACK OF SHG LEADERS

S.No	SCHEMES AND BENEFITS	SHG's	MEMBERS	AMOUNT
1	CIF benefitted SHG's	19	96	355000
2	Bank linkage by VO	29	-	14555000
3	Pavala Vaddi benefit	25	-	461116
4	Benefit from SGSY	3	-	330000
5	Revolving fund from VO	12	-	120000
6	Deepam Gas connection	15	117	-
7	Children Scholarship	-	85	42500
8	Death Claims	8	-	24000
9	NPS Swavalamban Joined	-	5	-

SUCCESS STORIES



PAPPAYA CULTIVATOR



SMALL SHOP

SUCCESS STORIES



DIARYING



LILY CULTIVATOR

MGNREGS



YEAR 2011-12

- 73 WORKS UNDER PROGRESS
- Rs. 53.6 LAKH VALUE

- 168 HOUSEHOLDS
- 248 REGISTRATIONS

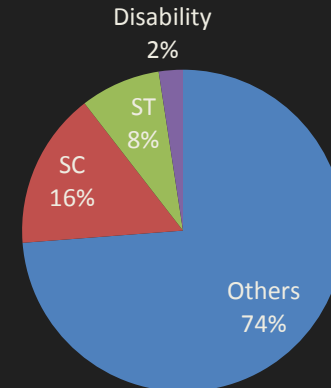
OBSERVATIONS

- GENDER DIFFERENCE IN PARTICIPATION
- WAGE EQUALIZER
- COMPUTERISED ACCOUNT PAYMENT
- LAND IMPROVEMENT
 - STONE BUNDING
 - STONE REMOVAL
 - JUNGLE CLEARANCE
 - STAGGERED TRENCH
 - WATER PERCOLATION PITS
- ROAD CONSTRUCTION

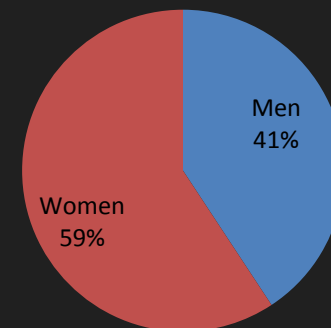
SUGGESTIONS

- NO. OF WORK DAYS \propto FAMILY SIZE
- ASSET CREATION

Distribution of individuals getting job under MGNREGS



Gender wise distribution of labor in MGNREGS



PANCHAYAT RAJ INSTITUTIONS



OBSERVATIONS

- BUDGET 2011-12 = Rs.116240
- Three functions-sanitation, street lighting, drinking water
- ACCESSIBLE TO PEOPLE

HOUSING SCHEMES IMPLEMENTATION

INDRAMMA SCHEME

- Rs.45000 – Rs.65000
- SANCTIONED HOUSES = 130
- COMPLETED = 50



SUGGESTIONS

- AWARENESS OF SCHEME
- LOW COST HOUSING DESIGNS

Conclusions

- Government schemes and benefits reaching to common people.
- Active participations in SHG's enhances economic opportunities in the community
- Reluctance of the farmers to adopt new agricultural methodologies and practices need to be addressed
- Vocational training for skill development
- Problem of identity among Yanadi ST community

